



## Your contact details:

Title:

Name:

Company:

Customer no.

Street:

ZIP/postal code, city:

Country:

E-mail:

Phone:

## Ordering spare parts

The spare parts for Type 3256 are listed on the next pages. This document can also be used for ordering:

1. Fill in your contact data and information on the product.
2. Enter the quantity of spare parts needed.
3. Click [Send form] button to attach the PDF form to an e-mail.
4. Attach additional information (e.g. invoice, photos) to the e-mail, if necessary.
5. Send e-mail to spareparts-de@samsongroup.com.

Either

Configuration ID (Var-ID):

or

SAMSON order no.:

Position in order:

or specifications on the nameplate

(description of the currently valid nameplate ► EB 8065)

Type designation:	<input type="text" value="3256"/>
Material:	<input type="text"/>
Nominal size:	<input type="text"/>
Pressure rating:	<input type="text"/>
Flow coefficient:	<input type="text"/>
Characteristic:	<input type="text"/>
Seat-plug seal:	<input type="text"/>
Seat code:	<input type="text"/>
Pressure balancing:	<input type="text"/>
Flow divider/AC trim:	<input type="text"/>
Version	<input type="text"/> Standard bonnet <input type="text"/> With insulating section <input type="text"/> With bellows seal
Application	<input type="text"/> NACE <input type="text"/> Oxygen <input type="text"/> Industrial gases <input type="text"/> Chlorine

Send form

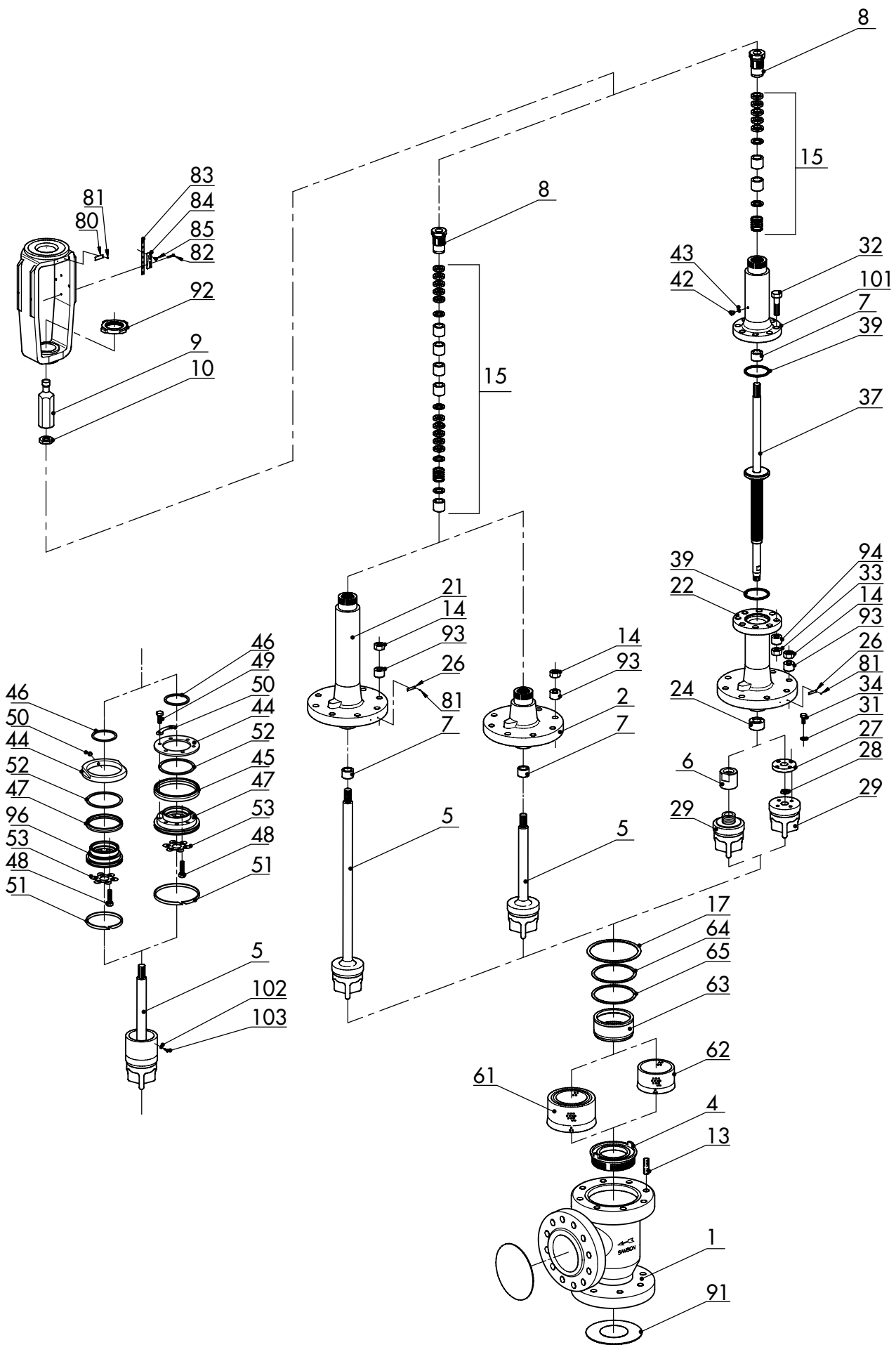
Print form

Clear form

Edition November 2024

Spare Parts List

EL 8065 EN



Spare part no.		Qty.	Part subject to wear <sup>1)</sup>	Purity require- ments <sup>2)</sup>
1	Body			•
2	Bonnet			•
3	Yoke			
4	Seat		•	•
5	Plug (with plug stem)		•	•
6	Bellows nut		•	•
7	Guide bushing			•
8	Threaded bushing (packing nut)		•	•
9	Stem connector nut			
10	Lock nut			
13	Stud bolt		•	
14	Body nut		•	
15	Packing		•	•
17	Body gasket		•	•
21	Insulating section			•
22	Bellows seal			•
24	Guide bushing			•
26	Label (bellows seal or insulating section)			
27	Flange			•
28	Clamping ring		•	•
29	Plug for version with bellows seal		•	•
31	Washer		•	•
32	Bolt		•	
33	Nut		•	
34	Screw		•	•
37	Plug stem with metal bellows		•	•
39	Gasket		•	•
42	Screw plug			•
43	Gasket		•	•
44	Ring/ring nut <sup>3)</sup>			•
45	Packing ring <sup>3)</sup>		•	•
46	Gasket <sup>3)</sup>		•	•

Spare part no.		Qty.	Part subject to wear <sup>1)</sup>	Purity require- ments <sup>2)</sup>
47	Support <sup>3)</sup>			•
48	Hex screw <sup>3)</sup>		•	•
49	Hex screw <sup>3)</sup>		•	•
50	Lock <sup>3)</sup>		•	•
51	Guide <sup>3)</sup> (several guides only for version with graphite seal)		•	•
52	Ring <sup>3)</sup> (only for version with graphite seal)			•
53	Snap ring <sup>3)</sup>		•	•
61	Flow divider ST 2 <sup>4)</sup>		•	•
62	Flow divider ST 1 or ST 3 <sup>4)</sup>		•	•
63	Ring <sup>4)</sup>			•
64	Gasket <sup>4)</sup>		•	•
65	Gasket <sup>4)</sup>		•	•
80	Nameplate			•
81	Grooved pin			
82	Screw			
83	Hanger			
84	Travel indicator scale			
85	Screw			
91	Protective caps			•
92	Castellated nut			
93	Expansion sleeve		•	
94	Expansion sleeve <sup>5)</sup>		•	
101	Bellows bonnet			•
102	Snap ring <sup>3)</sup> (only for version with bellows seal)		•	•
103	Screw <sup>3)</sup> (only for version with bellows seal)		•	•

- <sup>1)</sup> Parts subject to wear are a subset of the spare parts, which are subjected to normal operational wear or fatigue.
- <sup>2)</sup> For certain applications (e.g. for oxygen service), this material is specified as "cleaned".
- <sup>3)</sup> Version with balanced valve plug
- <sup>4)</sup> Version with flow divider
- <sup>5)</sup> For DN 15 to 150 only

Specifications subject to change without notice

---